



# Volpak Solutions for Wet Pet Food







## Why Volpak?

Volpak designs and manufactures a wide range of HFFS machines for packing wet pet food in different formats and sizes.

## Expertise & know-how in the pet food industry



Pouches' appeal is a determining factor, as well as the quality of the finishing. Our technology allows you to produce attractive pouches that are both leak-free and cost-effective compared to pre-made pouches.



Machines equipped with the latest features, seal integrity kit, steam, single or multiple fill station for the gravy and chunks, necessary for the wet pet food pouches and retort process.



Sustainable ready: all Volpak solutions are ready to work with 100% recyclable and sustainable materials.



Wide range portfolio meeting customer demands for quality, quick pouch size change, and production capacity, up to 360 pouches/min.

## Wet Pet Food

**01.** Caring for pets has become an important aspect of consumer behaviour, as evidenced by the growth of the premium sector in pet products.

**02.** The doypack with zipper for pet treats, snacks, or pet care complements, and flat sachets for wet pet food, have emerged as the preferred packaging options for pet food.

**03.** Flexible packaging offers numerous advantages, such as convenience, lightweight, long shelf life, and the potential for being 100% recyclable.

**04.** E-commerce has introduced diverse packaging formats to meet the requirements of the global market, prioritizing tailor-made designs for online purchasing channels.







# Solutions

## **01. VOLPAK SI SERIES**

Horizontal Form-Fill-Seal machine for medium to high speed projects, featuring servo-driven technology and accommodating a wide range of options and applicators.

## **02. VOLPAK SP SERIES**

Horizontal Form-Fill-Seal machines for medium-speed projects, mainly mechanical-driven, and accommodating various options and applicators.

# VOLPAK SI SERIES:

Horizontal Form-Fill-Seal machine for medium to high speed projects, featuring servo-driven technology and accommodating a wide range of options and applicators.







# SI 440

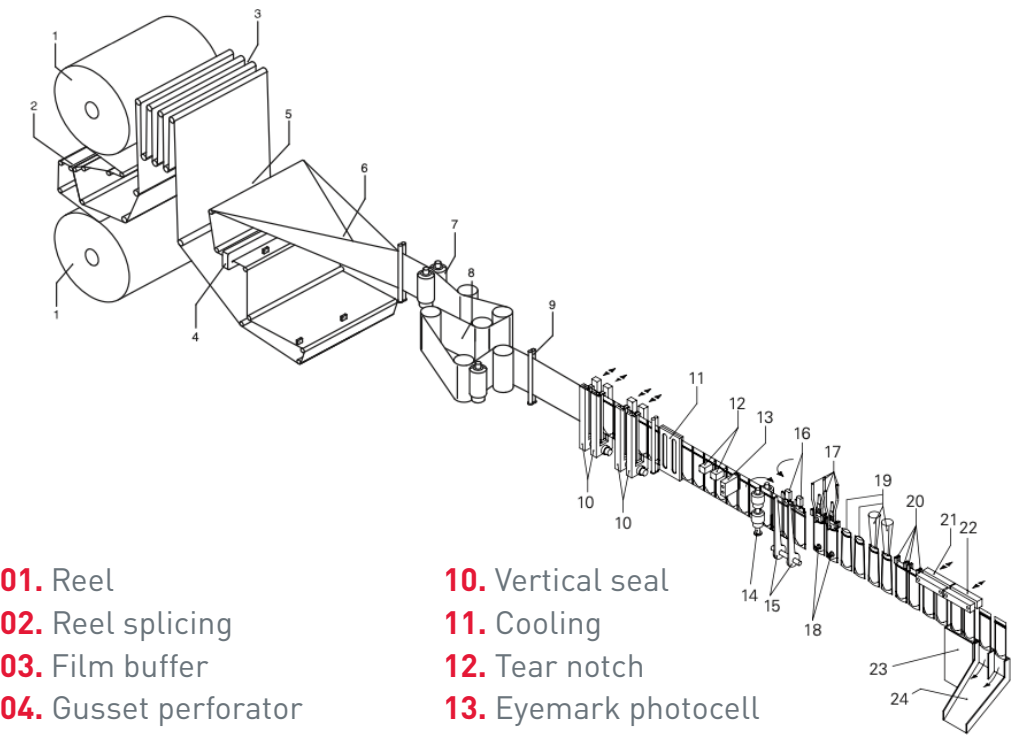
Horizontal Form-Fill-Seal (HFFS) machine for stand-up pouches, operating from a single reel of flexible packaging material, forming the pouch, filling it with product, and sealing.

## Machine Highlights

- Duplex, Triplex or Quadruplex operation
- Smart HMI, easy and intuitive
- Mirror execution for footprint optimization
- Three dosing stations for multi-product filling
- Easy size change with guided operations and servo assisted regulations
- Low operating and maintenance costs
- Wide variety of pouch styles available (regular, shaped, top cap, corner cap, front cap, zipper, 3- or 4-side sealed sachets,...)
- Ready to work with 100% recyclable materials



## Operating Cycle



01. Reel

02. Reel splicing

03. Film buffer

04. Gusset perforator

05. Reel aligner

06. Forming triangle

07. Servo roller for film pulling

08. Buffer to intermittent motion

09. Film guide
10. Vertical seal

11. Cooling

12. Tear notch

13. Eyemark photocell

14. Servo rollers for film transport

15. Cutting knife

16. Pouch positioning & transfer

17. Pouch opening

18. Bottom pouch opening
19. Filling stations

20. Pouch top stretching

21. Top sealing

22. Top cooling station

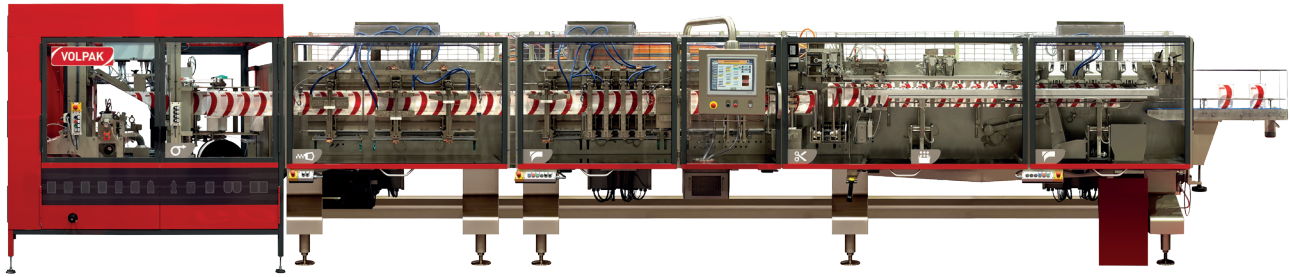
23. Pouch reject station

24. Discharge ramp

## Technical Specifications

		Duplex	Triplex	Quadruplex
Min pouch size, W x H	mm	120 x 110 x 30	85 x 110 x 30	85 x 110 x 30
Max pouch size, W x H	mm	220 x 310 x 125	145 x 310 x 85	110 x 310 x 60
Max pouch volume	c.c	2000	600	300
Max output	ppm	120	180	240
Type of material		Heatsealable		
Max reel width	mm	745		
Max reel diameter	mm	600		
Core reel diameter	mm	74 - 78 / 150 - 154		
Electrical data		200 - 480 V / 50, 60 Hz / 3Ph+G		
Machine dimensions, L x A x H	mm	12300 x 2180 x 2260		
Net weight	kg	10000		





# SI 360

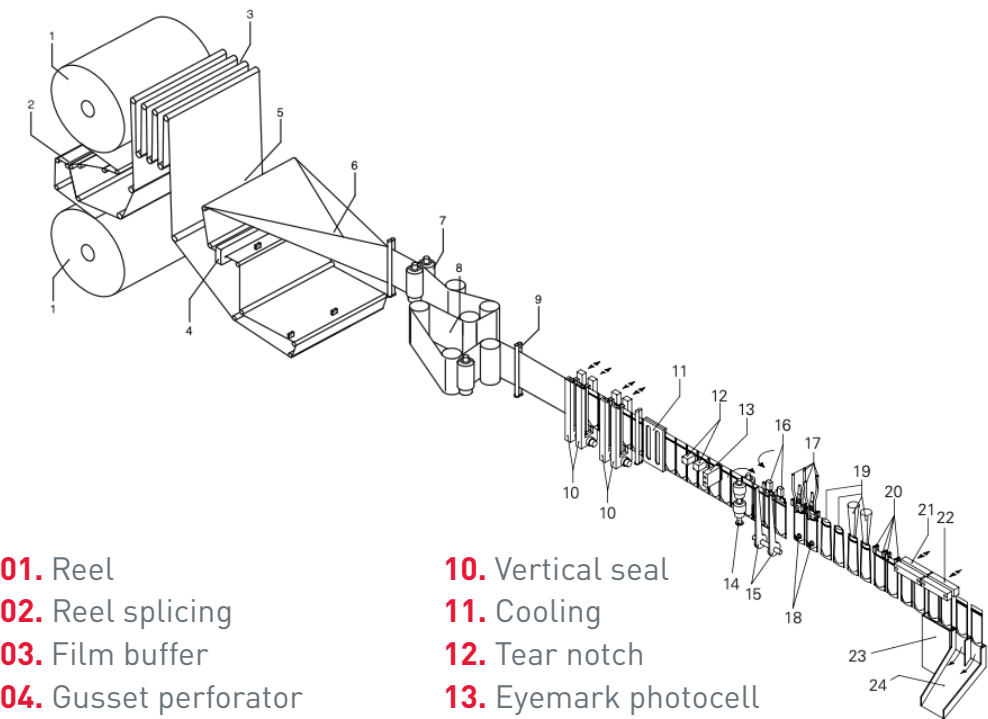
Horizontal Form-Fill-Seal (HFFS) machine for stand-up pouches, operating from a single reel of flexible packaging material, forming the pouch, filling it with product, and sealing.

## Machine Highlights

- Duplex, Triplex or Quadruplex operation
- Smart HMI, easy and intuitive
- Mirror execution for footprint optimization
- Three dosing stations for multi-product filling
- Easy size change with guided operations and quick regulations
- Low operating and maintenance costs
- Wide variety of pouch styles available (regular, shaped, top cap, corner cap, front cap, zipper, 3- or 4-side sealed sachets,...)
- Ready to work with 100% recyclable materials



## Operating Cycle



01. Reel

02. Reel splicing

03. Film buffer

04. Gusset perforator

05. Reel aligner

06. Forming triangle

07. Servo roller for film pulling

08. Buffer to intermittent motion

09. Film guide
10. Vertical seal

11. Cooling

12. Tear notch

13. Eyemark photocell

14. Servo rollers for film transport

15. Cutting knife

16. Pouch positioning & transfer

17. Pouch opening

18. Bottom pouch opening
19. Filling stations

20. Pouch top stretching

21. Top sealing

22. Top cooling station

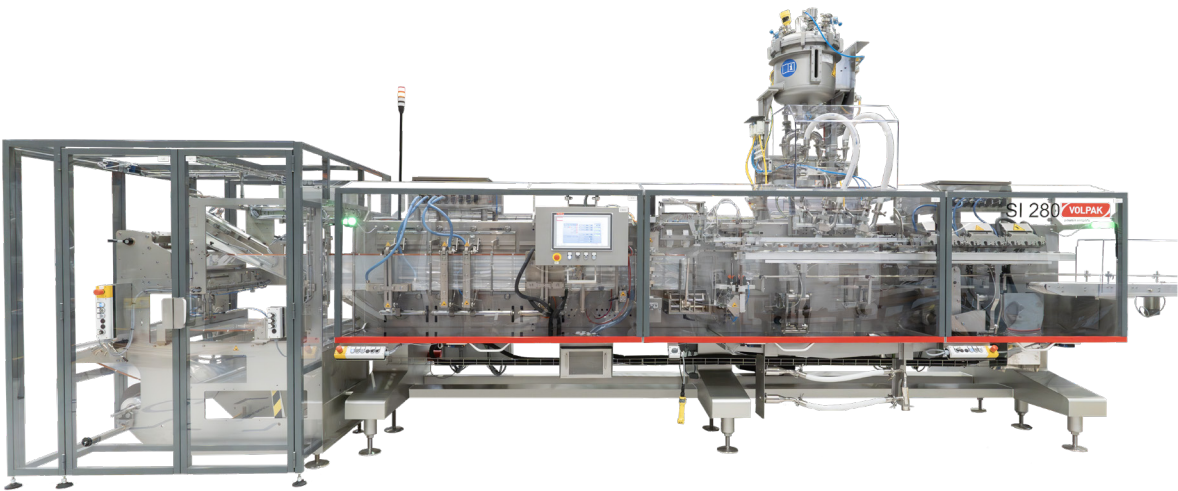
23. Pouch reject station

24. Discharge ramp

## Technical Specifications

		Duplex	Triplex	Quadruplex
Min pouch size, W x H	mm	120 x 110 x 30	85 x 110 x 30	85 x 110 x 30
Max pouch size, W x H	mm	180 x 310 x 90	120 x 310 x 60	90 x 310 x 60
Max pouch volume	c.c	1500	500	200
Max output	ppm	120	180	240
Type of material		Heatsealable		
Max reel width	mm	710		
Max reel diameter	mm	600		
Core reel diameter	mm	74 - 78 / 150 - 154		
Electrical data		200 - 480 V / 50, 60 Hz / 3Ph+G		
Machine dimensions, L x A x H	mm	10000 x 2075 x 2420		
Net weight	kg	8600		



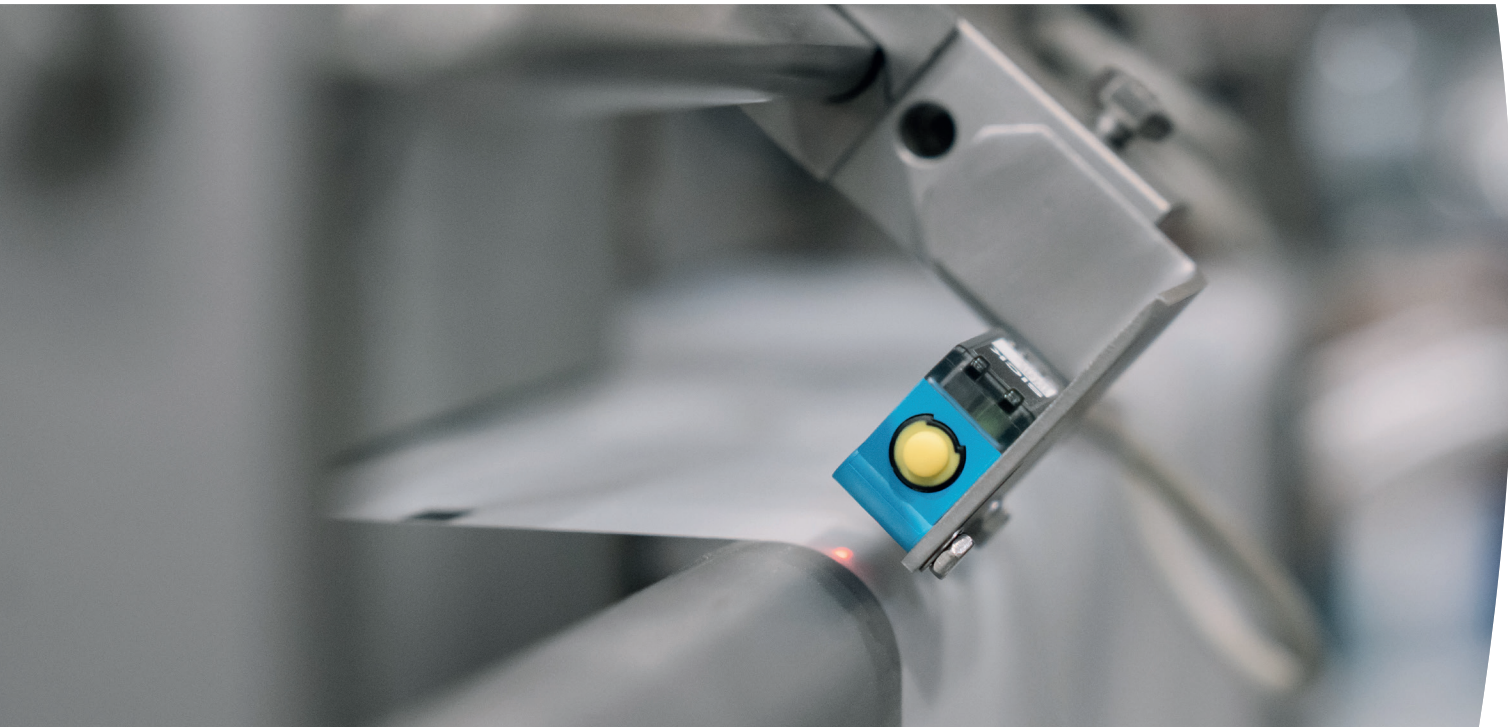


# SI 280

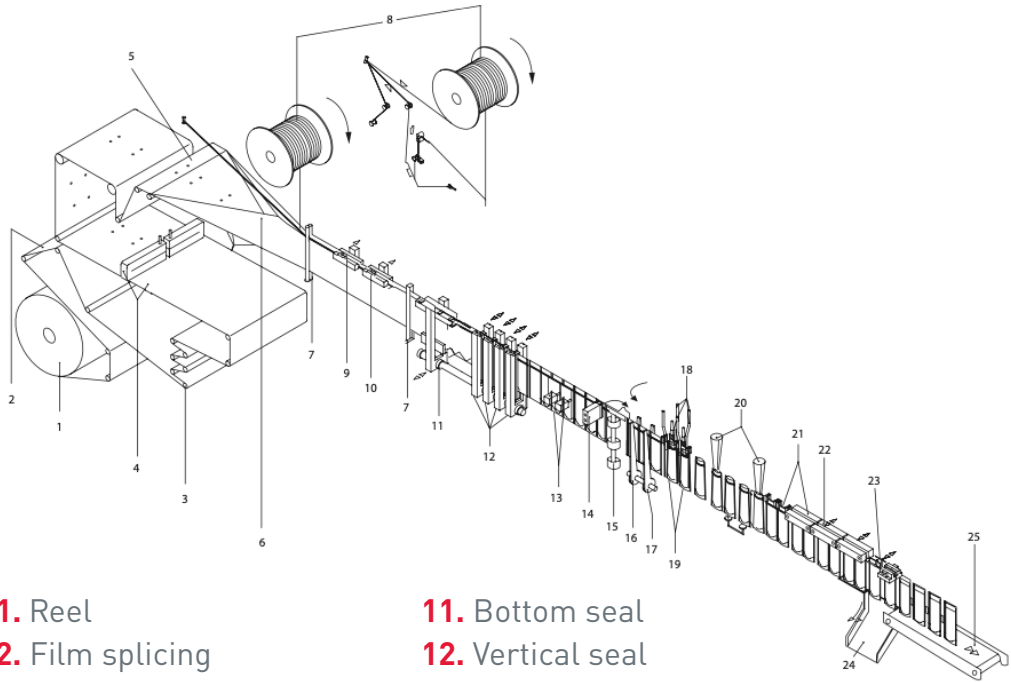
Horizontal Form-Fill-Seal (HFFS) machine for stand-up pouches, operating from a single reel of flexible packaging material, forming the pouch, filling it with product, and sealing.

## Machine Highlights

- Simplex, Duplex or Triplex operation
- Smart HMI, easy and intuitive
- Mirror execution for footprint optimization
- Three dosing stations for multi-product filling
- Easy size change with guided operations and quick regulations
- Low operating and maintenance costs
- Wide variety of pouch styles available (regular, shaped, top cap, corner cap, front cap, zipper, 3- or 4-side sealed sachets,...)
- Ready to work with 100% recyclable materials



## Operating Cycle



01. Reel

02. Film splicing

03. Unwinder

04. Gusset perforator

05. Band aligner

06. Forming triangle

07. Film guides

08. Zipper unwinder

09. Zipper seal

10. Zipper sealer
11. Bottom seal

12. Vertical seal

13. Tear notch

14. Photocell

15. Servo rollers for film transport

16. Knife

17. Knife and unitary cutting

18. Pouch opening

19. Bottom pouch opening
20. Fillings stations

21. Pouch stretching

22. Top sealing

23. Pouch reject station

24. Reject ramp

25. Discharge Belt

## Technical Specifications

		Simplex	Duplex	Triplex
Min pouch size, W x H	mm	75 x 90 x 30	75 x 90 x 30	75 x 90 x 30
Max pouch size, W x H	mm	280 x 310 x 105	140 x 310 x 80	90 x 310 x 60
Max pouch volume	c.c	2500	600	1500
Max output	ppm	80	160	240
Type of material		Heatsealable		
Max reel width	mm	725		
Max reel diameter	mm	600		
Core reel diameter	mm	74 - 78 / 150 - 154		
Electrical data		200 - 480 V / 50, 60 Hz / 3Ph+G		
Machine dimensions, L x A x H	mm	8035 x 1865 x 2150		
Net weight	kg	6000		

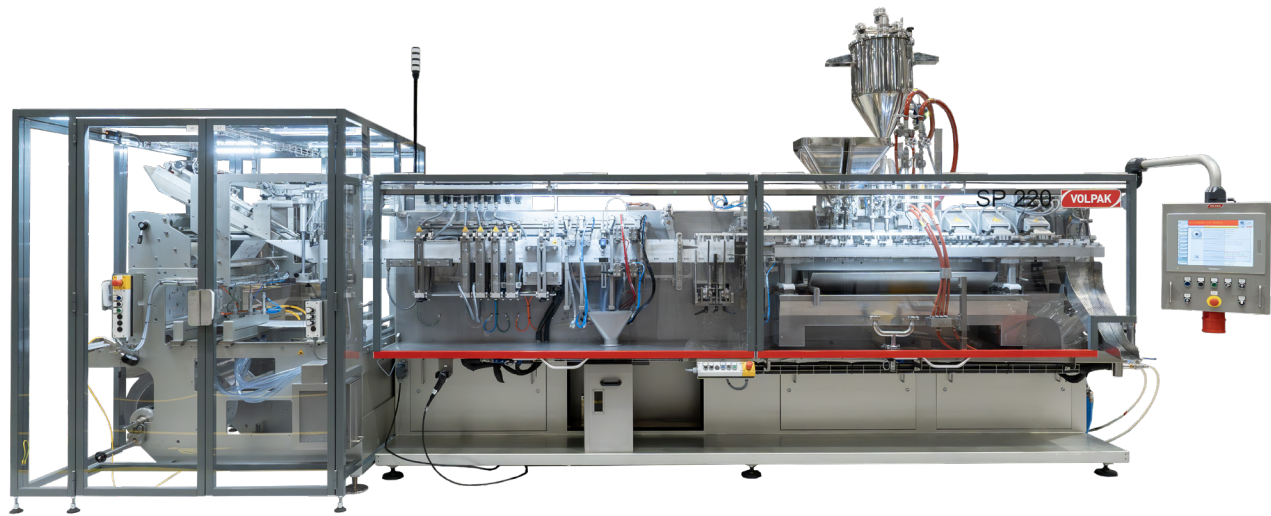


# **VOLPAK SP SERIES:**

Horizontal Form-Fill-Seal machines for medium-speed projects, mainly mechanical-driven, and accommodating various options and applicators.







# SP 220

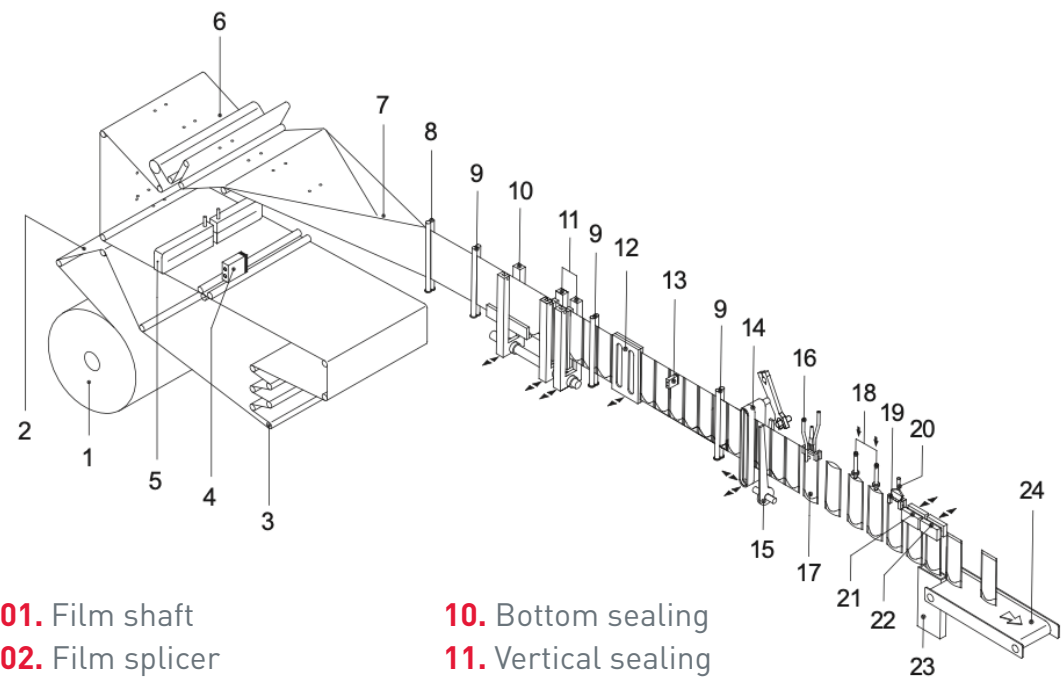
Horizontal Form-Fill-Seal (HFFS) machine for sachets, operating from a single reel of flexible packaging material, forming the pouch, filling it with product, and sealing.

## Machine Highlights

- Simplex or Duplex operation
- Smart HMI
- Easy handling and low maintenance costs
- Zipper and cap applicator for re-closable pouches
- Wide variety of sachet formats available both for stand-up or flat pouches
- Ready to work with 100% recyclable materials



## Operating Cycle



01. Film shaft

02. Film splicer

03. Unwinder arm

04. Photocell

05. Perforator

06. Reel aligner

07. Forming triangle

08. Film guide

09. Film guide
10. Bottom sealing

11. Vertical sealing

12. Cooling and flattening

13. Photocell

14. Film transport

15. Scissors

16. Top pouch opening

17. Bottom pouch opening

18. Dosing station
19. Static stretching

20. Foam suction

21. Top sealing

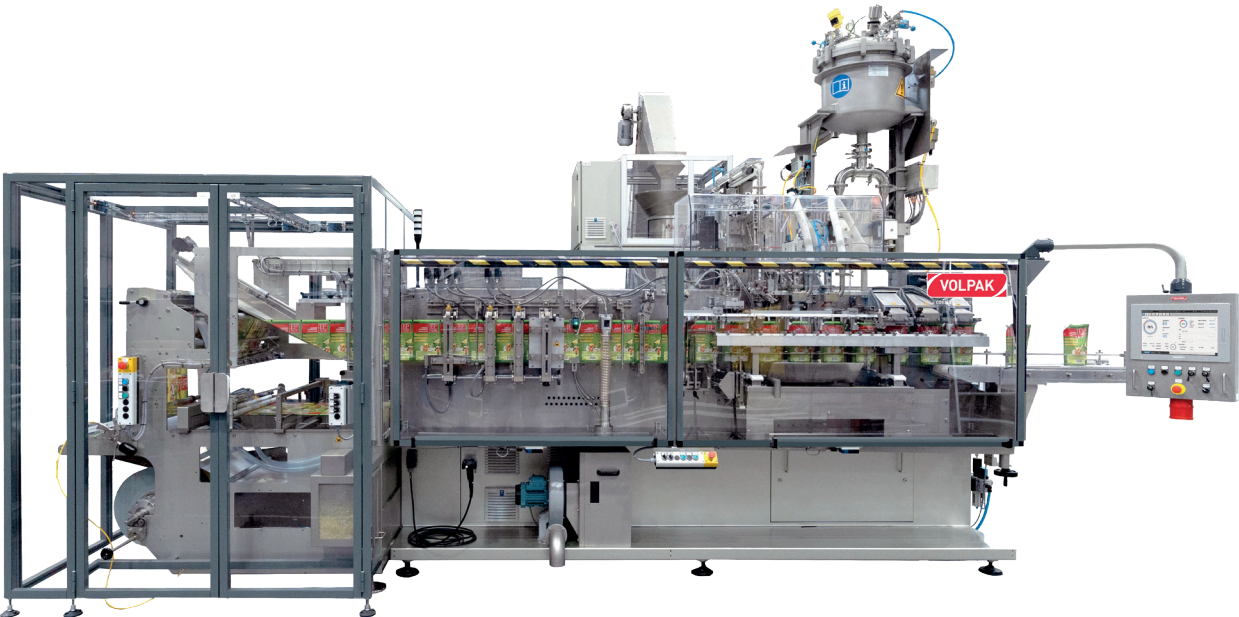
22. Top cooling seals

23. Rejected pouches

24. Outlet belt

## Technical Specifications

		Simplex	Duplex
Min pouch size, W x H	mm	70 x 60 / 70 x 100 x 30	50 x 60 / 50 x 90 x 30
Max pouch size, W x H	mm	220 x 270 (x 90)	110 x 270 (x 100)
Max pouch volume	c.c	1200	350
Max output	ppm	100	200
Type of material		Heatsealable	
Max reel width	mm	630	
Max reel diameter	mm	600	
Core reel diameter	mm	74 - 78 / 150 - 154	
Electrical data		220 - 380 - 440 V / 50, 60 Hz	
Machine dimensions, L x A x H	mm	5650 x 1650 x 1800	
Net weight	kg	5750	



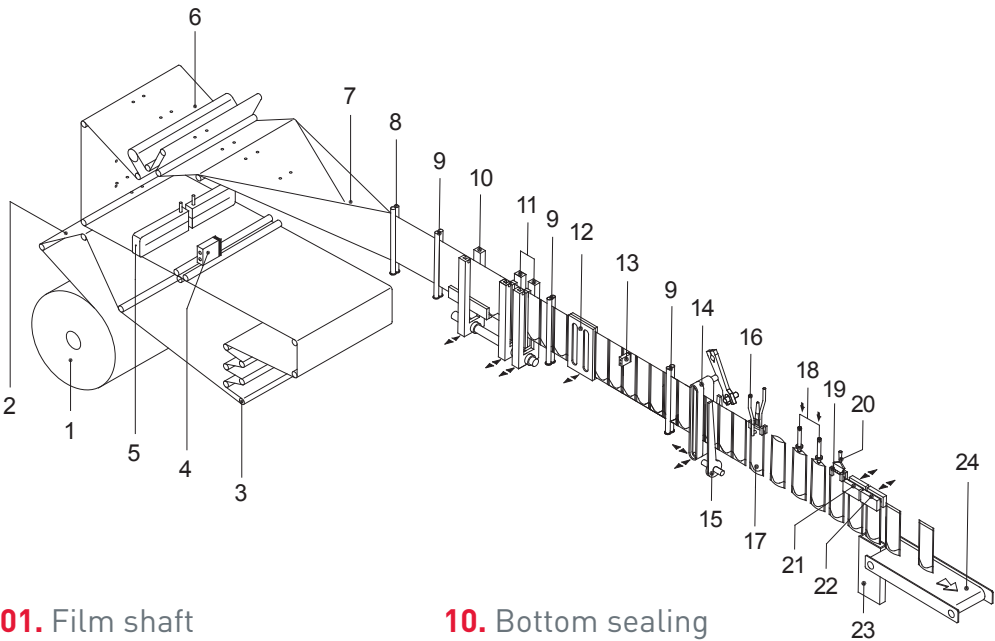
# SP 170

Horizontal Form-Fill-Seal (HFFS) machine for sachets, operating from a single reel of flexible packaging material, forming the pouch, filling it with product, and sealing.

## Machine Highlights

- Simplex or duplex operation
- Smart HMI, easy and intuitive
- Two dosing systems can be installed simultaneously
- Space to include additional equipment, such as cameras, printers, labelers...
- Numeric counters for easy size change
- Low operating and maintenance costs
- Wide variety of sachet formats available (3- or 4-side sealed sachets, twin sachets, shaped sachets...)
- Ready to work with 100% recyclable materials

## Operating Cycle



01. Film shaft

02. Film splicer

03. Unwinder arm

04. Photocell

05. Perforator

06. Reel aligner

07. Forming triangle

08. Film guide

09. Film guide
10. Bottom sealing

11. Vertical sealing

12. Cooling and flatterring

13. Photocell

14. Film transport

15. Scissors

16. Top pouch opening

17. Bottom pouch opening

18. Dosing station
19. Static stretching

20. Foam suction

21. Top sealing

22. Top cooling seals

23. Rejected pouches

24. Outlet belt

## Technical Specifications

		Simplex	Duplex
Min pouch size, W x H	mm	70 x 70 / 70 x 90 x 30	50 x 70
Max pouch size, W x H	mm	170 x 270 (x100)	85 x 270
Max pouch volume	c.c	1000	150
Max output	ppm	100	200
Type of material		Heatsealable	
Max reel width	mm	640	
Max reel diameter	mm	600	
Core reel diameter	mm	74 - 78 / 150 - 154	
Electrical data		220,380,440V / 50, 60 Hz / 3Ph+G	





# Coesia Group in the world



COESIA is a group of innovation-based industrial and packaging solutions companies operating globally, headquartered in Bologna, Italy.

Coesia's companies are leaders in the sectors of:

- **Advanced automated machinery**
- **Industrial process solutions**
- **High-performance transmissions**

Coesia's customers are leading players in a broad range of industries, including Consumer Goods, Tobacco, Healthcare, Aerospace, Racing & Automotive and Electronics.

## Volpak S.A.U

Pol. Ind. Can Vinyalets  
C/ Can Vinyalets 4  
08130 Santa Perpètua de Mogoda  
Barcelona, Spain  
main@volpak.com



[www.volpak.com](http://www.volpak.com)