



Enflex
we health
care

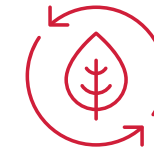




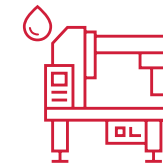
Pharma standards and ease of use: this is Enflex.



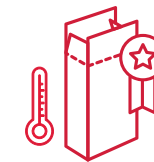
Proven know-how: more than 1100 machines and 205 complete lines sold - 127+ billion produced pouches - 540 customers worldwide.



Sustainable ready: all Enflex solutions are ready to work with 100% recyclable & sustainable materials.



Reliable & User-friendly solutions: easy operation and easy access to components for quick maintenance and cleaning.



Healthcare Specialist: we are experts in supplying solutions to the pharmaceutical industry. Let us help you find the right solution for you!

- Pharma documentation always ready: Enflex equipment for the pharmaceutical industry undergoes a qualification process to comply with GMP requirements, thus guaranteeing performance quality and accuracy. We enable QP/RA/FDS/HDS/SDS/DQ/IQ/OQ protocols documentation for our customers.
- Enflex machines fully comply with 21 CFR Part 11
- All Enflex machines feature the optional installation of OCR/OCV cameras and barcode scanners.
- Enflex solutions can be equipped with an independent rejection track for sampling (rejection/sampling).

Pharma & Healthcare market

01. Serialization and traceability continue to impact the pharmaceutical industry.

02. Digital technology and Internet of Things (IoT) are helping companies connect their machinery to smart devices, troubleshoot and simplify processes.

03. Medical device companies are streamlining their processes and adding more flexible solutions to their operations.

04. Sustainability is a key focus to reduce waste and improve cost efficiency. Flexible packaging is environmentally friendly, with a wide range of recyclable materials.

Why Enflex?

Enflex designs and produces a wide range of sachet machines to package pharmaceutical and nutraceutical products, as well as alcohol wipes, medical swab sticks and other medical devices.





Solutions

01. ENFLEX F SERIES

Horizontal Form Fill Seal sachet machines for personal care & healthcare products

02. ENFLEX F-TW SERIES

Horizontal Form Fill Seal sachet machines specially designed for wipes applications

03. ENFLEX F-TC SERIES

Horizontal Form Fill Seal machines specially designed for sachets with top cap.

04. ENFLEX PH SERIES

Horizontal Form Fill Seal sachet machines specially designed for pharmaceutical environments.

05. ENFLEX PHS SERIES

Vertical Multilane Stickpack machines for pharmaceutical & healthcare applications.

06. ENFLEX PHV SERIES

Vertical Multilane Sachet machines for pharmaceutical & healthcare applications.

07. ENFLEX PK SERIES

Horizontal Cartoning machines for complete packaging lines.

Enflex F Series:

Horizontal Form Fill Seal sachet machines for
personal care & healthcare products.





F-11

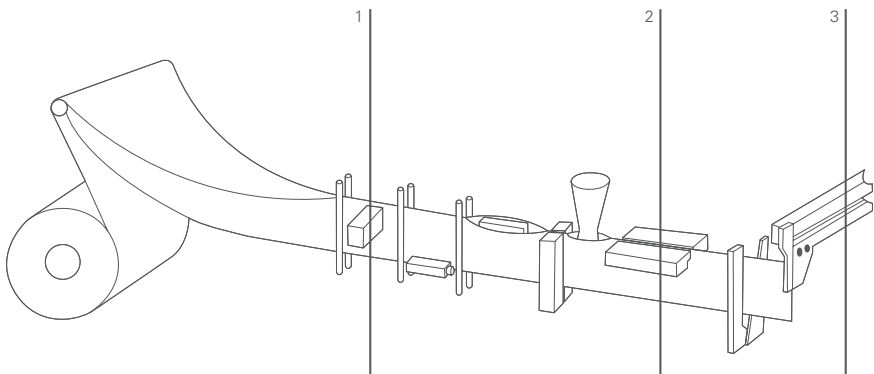
Horizontal Form-Fill-Seal (HFFS) machine for sachets, operating from a single reel of flexible packaging material, forming the pouch, filling it with product, and sealing.

Machine Highlights

- Simplex or duplex operation
- Smart HMI, easy and intuitive
- Reduced footprint
- Low operating and maintenance costs
- Wide variety of sachet formats available (3- or 4-side sealed sachets, twin sachets, strings of sachets, shaped sachets...)
- Ready to work with 100% recyclable materials



Operating Cycle



01. Unwinding and folding **02.** Forming and filling **03.** Cutting and exit

Technical Specifications

		Simplex	Duplex
Min pouch size, W x H	mm	40 x 40	40 x 40
Max pouch size, W x H	mm	110 x 130	70 x 130
Max pouch volume	c.c	60	30
Max output	ppm	90	180
Type of material	Heatsealable		
Max reel width	mm	260	
Max reel diameter	mm	450	
Core reel diameter	mm	70 - 75	
Consumption	kW	3,7	4,2
Electrical data	200 - 480 V / 50, 60 Hz / 3Ph + G		
Machine dimensions, L x A x H	mm	2140 x 930 x 1800	
Net weight	kg	680	780



F-11W

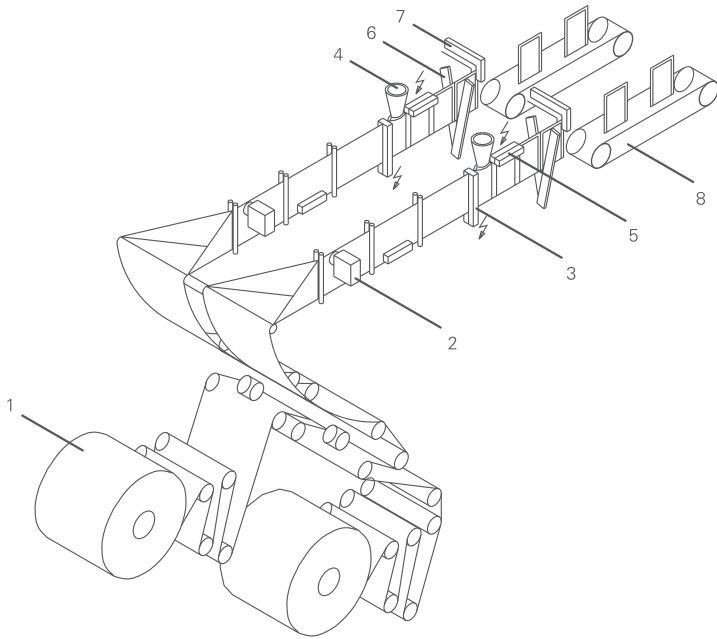
Horizontal Form-Fill-Seal (HFFS) machine for sachets produced simultaneously on two lines, operating from two reels of flexible material, forming the pouches, filling them with product, and sealing.

Machine Highlights

- Simplex operation
- Smart HMI, easy and intuitive
- Ideal for high productions of single SKUs
- Reduced footprint
- Low operating and maintenance costs
- Ready to work with 100% recyclable materials



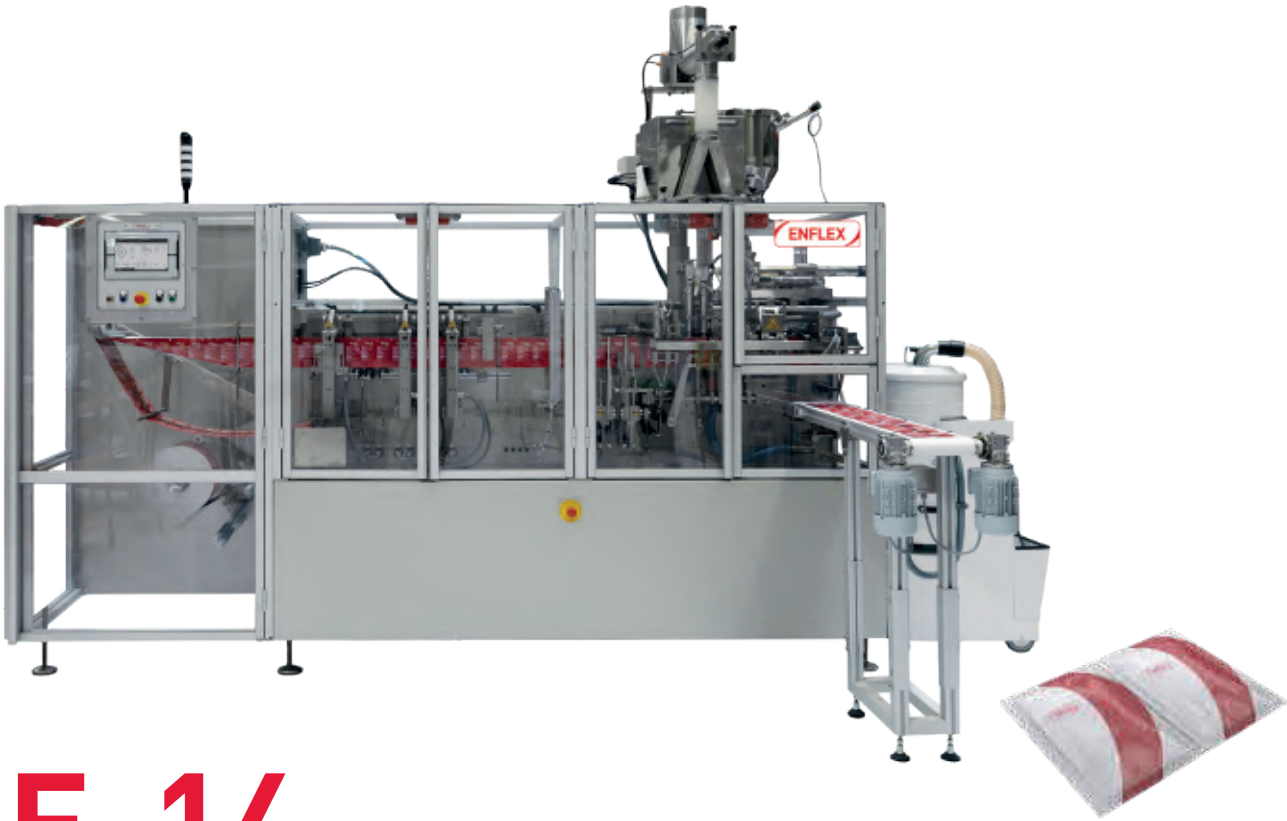
Operating Cycle



- 01. Reel
- 02. Photocell
- 03. Vertical seal
- 04. Filling
- 05. Top seal
- 06. Scissors
- 07. Film draw
- 08. Discharge belt

Technical Specifications

		Simplex	Duplex
Min pouch size, W x H	mm	40 x 40	40 x 40
Max pouch size, W x H	mm	110 x 130	70 x 130
Max pouch volume	c.c	60	30
Max output	ppm	180	360
Type of material	Heatsealable		
Max reel width	mm	260	
Max reel diameter	mm	450	
Core reel diameter	mm	70 - 75	
Consumption	kW	3,7	8,4
Electrical data	200 - 480 V / 50, 60 Hz / 3Ph + G		
Machine dimensions, L x A x H	mm	2520 x 1230 x 1800	
Net weight	kg	800	900



F-14

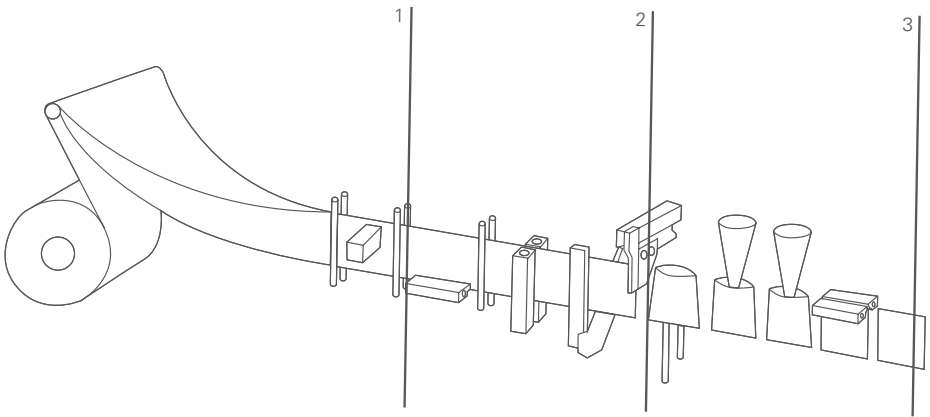
Horizontal Form-Fill-Seal (HFFS) machine for sachets, operating from a single reel of flexible packaging material, forming the pouch, filling it with product, and sealing.

Machine Highlights

- Simplex or duplex operation
- Smart HMI, easy and intuitive
- Two dosing systems can be installed simultaneously
- Numeric counters for easy size change
- Low operating and maintenance costs
- Wide variety of sachet formats available (3- or 4-side sealed sachets, twin sachets, strings of sachets, shaped sachets...)
- Ready to work with 100% recyclable materialsx



Operating Cycle



01. Unwinding and folding
02. Forming and cutting
03. Opening, filling and sealing

Technical Specifications

		Simplex	Duplex
Min pouch size, W x H	mm	50 x 70	50 x 70
Max pouch size, W x H	mm	140 x 200	70 x 200
Max pouch volume	c.c	300	50
Max output	ppm	90	180
Type of material	Heatsealable		
Max reel width	mm	450	
Max reel diameter	mm	500	
Core reel diameter	mm	70 - 75	
Electrical data	200 - 480 V / 50, 60 Hz / 3Ph + G		



F-17

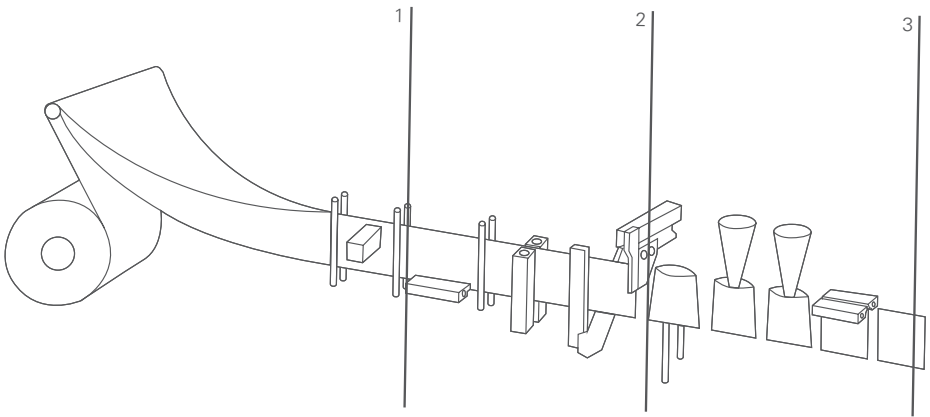
Horizontal Form-Fill-Seal (HFFS) machine for sachets, operating from a single reel of flexible packaging material, forming the pouch, filling it with product, and sealing.

Machine Highlights

- Simplex or duplex operation
- Smart HMI, easy and intuitive
- Two dosing systems can be installed simultaneously
- Space to include additional equipment, such as cameras, printers, labelers...
- Numeric counters for easy size change
- Low operating and maintenance costs
- Wide variety of sachet formats available (3- or 4-side sealed sachets, twin sachets, shaped sachets...)
- Ready to work with 100% recyclable materials



Operating Cycle



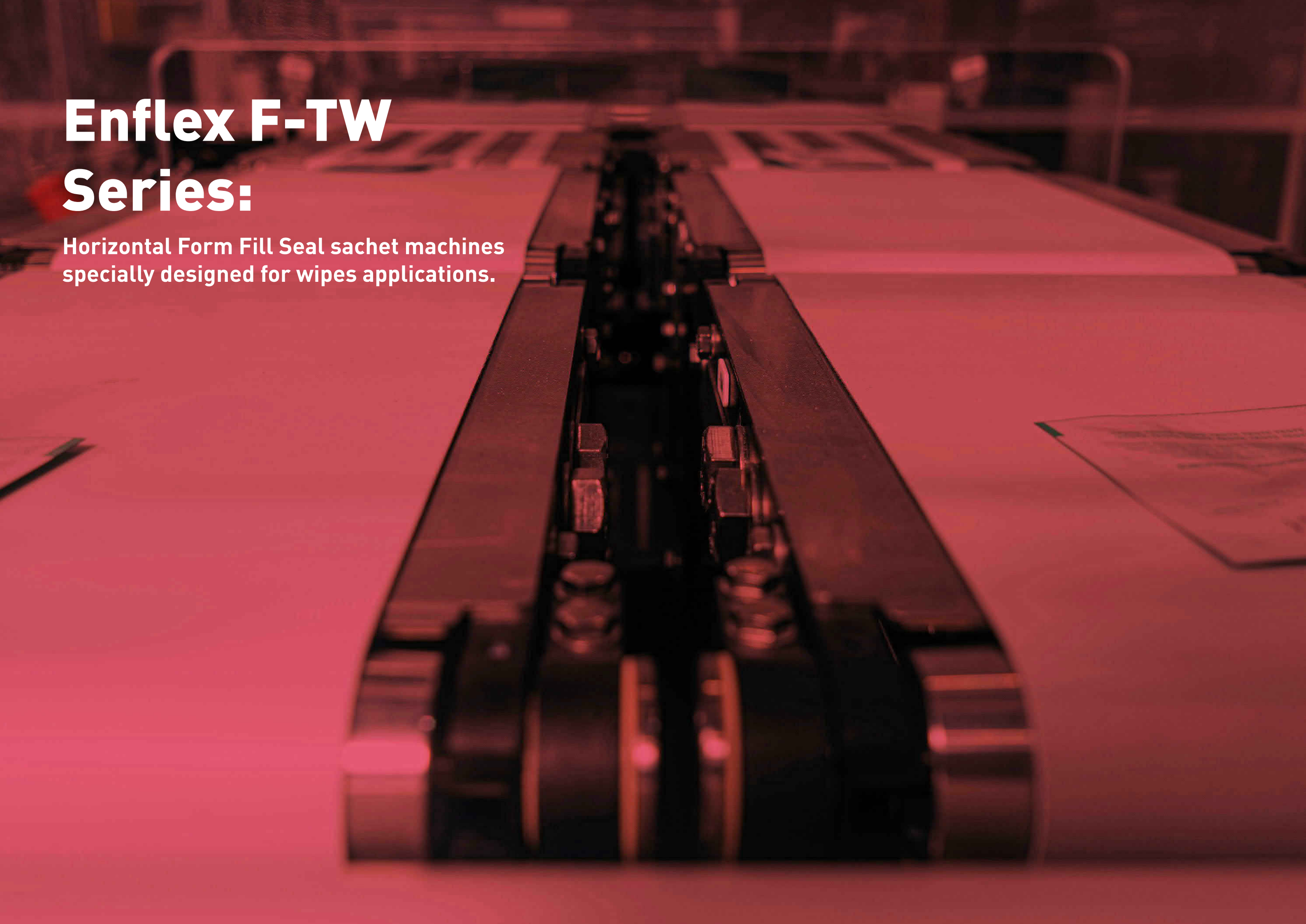
- 01.** Unwinding and folding **02.** Forming and cutting **03.** Opening, filling and sealing

Technical Specifications

		Simplex	Duplex
Min pouch size, W x H	mm	50 x 70	50 x 70
Max pouch size, W x H	mm	190 x 225	90 x 225
Max pouch volume	c.c	500	90
Max output	ppm	90	180
Type of material	Heatsealable		
Max reel width	mm	450	
Max reel diameter	mm	500	
Core reel diameter	mm	70 - 75	
Electrical data	200 - 480 V / 50, 60 Hz / 3Ph + G		

Enflex F-TW Series:

Horizontal Form Fill Seal sachet machines
specially designed for wipes applications.



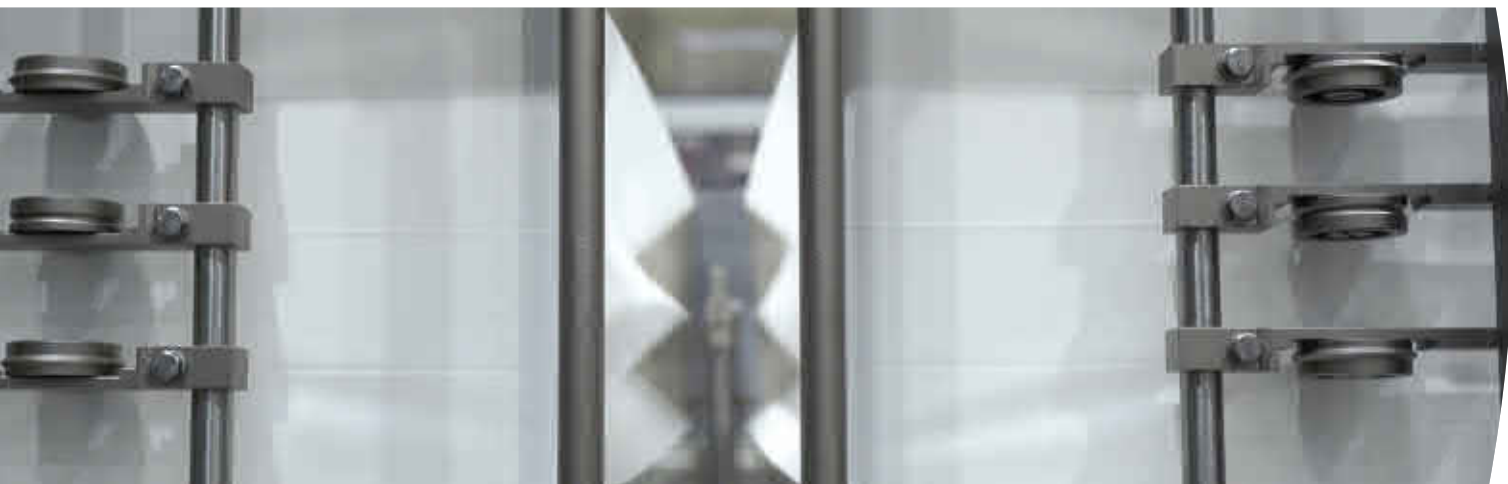


F-11 TW

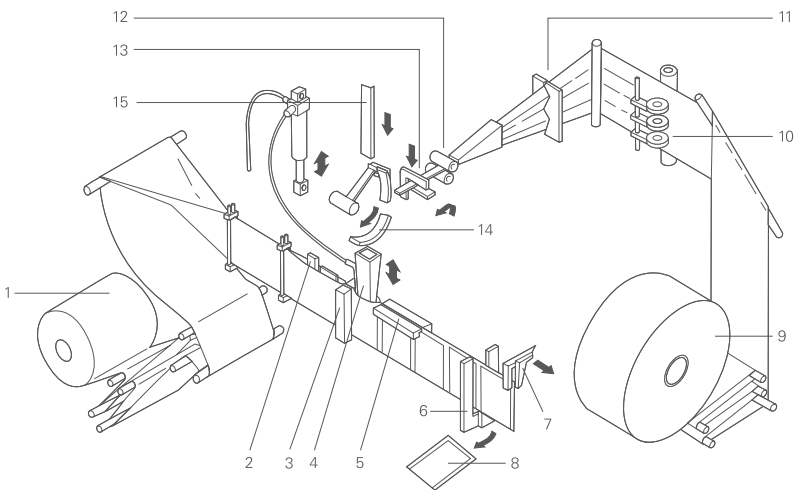
Horizontal Form-Fill-Seal (HFFS) machine for wipes in sachets, operating from a reel of flexible packaging material, forming the sachet, filling it with reel-fed wipes, and sealing.

Machine Highlights

- Wipe feeder designed for woven and non-woven tissues
- Simplex or duplex operation
- Smart HMI, easy and intuitive
- Reduced footprint
- Low operating and maintenance costs
- Wide variety of sachet formats available (3- or 4-side sealed sachets, twin sachets, strings of sachets...)
- Ready to work with 100% recyclable materials



Operating Cycle



- 01. Reel
- 02. Pouch opener
- 03. Vertical sealer
- 04. Towelette and liquid dosing
- 05. Top sealer
- 06. Scissors
- 07. Film draw
- 08. Exit
- 09. Towelette reel
- 10. Towelette creasing
- 11. Towelette folding
- 12. Towelette drive
- 13. Towelette scissors
- 14. Towelette folding
- 15. Towelette inserter

Technical Specifications

		Simplex		Duplex
Min pouch size, W x H	mm	40 x 40		40 x 40
Max pouch size, W x H	mm	110 x 130		70 x 130
Max pouch volume	c.c	10		10
Max output	ppm	90		180
Type of material		Heatsealable		
Max reel width	mm	260		
Max reel diameter	mm	450		
Core reel diameter	mm	70 - 75		
Towelette folding type		2-fold	3-fold	4-fold
Min towelette size, unfolded, W x H	mm	60 x 102	60 x 102	60 x 160
Max towelette size, unfolded, W x H	mm	300x190	300x240	300x240
Min / Max towelette width, folded	mm	17/60		17/40
Max towelette reel diameter	mm	1000		
Consumption	kW	3,4		4,4
Electrical data		200 - 480 V / 50, 60 Hz / 3Ph + G		
Machine dimensions, L x A x H	mm	2160 x 2200 x 1800		
Net weight	kg	770		



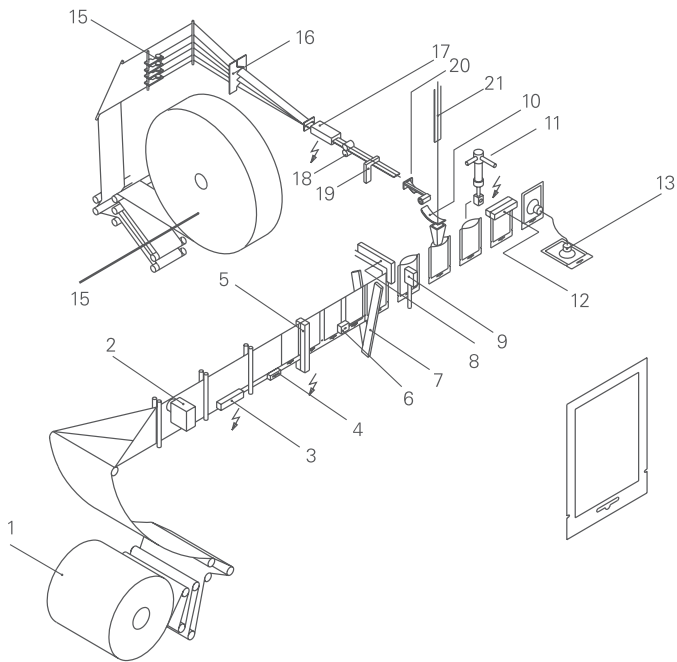
F-14 TW

Horizontal Form-Fill-Seal (HFFS) machine for wipes in sachets, operating from a reel of flexible packaging material, forming the sachet, filling it with reel-fed wipes, and sealing.

Machine Highlights

- Wipe feeder designed for woven and non-woven tissues
- Simplex or duplex operation
- Smart HMI, easy and intuitive
- Servo-driven motion for enhanced flexibility
- Space to install a second dosing system for products such as shampoos and creams
- Numeric counters for easy size change
- Low operating and maintenance costs
- Wide variety of sachet formats available (3- or 4-side sealed sachets, twin sachets...)
- Ready to work with 100% recyclable materials

Operating Cycle



- 01. Reel
- 02. Photocell
- 03. Bottom Sealer
- 04. Eurohole Perforator
- 05. Vertical sealer
- 06. Tear notch
- 07. Scissors
- 08. Film draw
- 09. Suction cups
- 10. Towelette
- 11. Liquid dosing
- 12. Top sealer
- 13. Pick & place exit
- 14. Towelette reel
- 15. Towelette creasing
- 16. Towelette folding
- 17. Towelette heating & flattener
- 18. Towelette drive
- 19. Towelette scissors
- 20. Towelette folding
- 21. Towelette inserter

Technical Specifications

		Simplex		Duplex
Min pouch size, W x H	mm	50 x 70		50 x 70
Max pouch size, W x H	mm	140 x 200		70 x 200
Max pouch volume	c.c	10		10
Max output	ppm	90		180
Type of material		Heatsealable		
Max reel width	mm	450		
Max reel diameter	mm	500		
Core reel diameter	mm	70 - 75		
Towelette folding type		2-fold	3-fold	4-fold
Min towelette size, unfolded, W x H	mm	60 x 110	60 x 110	60 x 100
Max towelette size, unfolded, W x H	mm	300x240	300x300	300x200
Min / Max towelette width, folded	mm	17/70		17/40
Max towelette reel diameter	mm	1000		
Consumption	kW	3,4		4,4
Electrical data		200 - 480 V / 50, 60 Hz / 3Ph + G		



F-17 TW

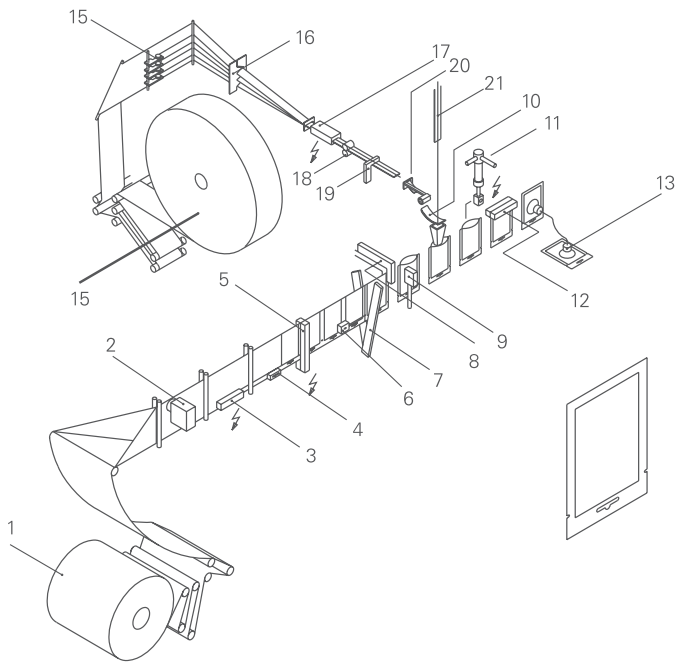
Horizontal Form-Fill-Seal (HFFS) machine for wipes in sachets, operating from a reel of flexible packaging material, forming the sachet, filling it with reel-fed wipes, and sealing.

Machine Highlights

- Wipe feeder designed for woven and non-woven tissues
- Simplex or duplex operation
- Smart HMI, easy and intuitive
- Servo-driven motion for enhanced flexibility
- Space to install a second dosing system for products (shampoos, creams...) or additional equipment (cameras, printers, labelers)
- Numeric counters for easy size change
- Low operating and maintenance costs
- Wide variety of sachet formats available (3- or 4-side sealed sachets, twin sachets...)
- Ready to work with 100% recyclable materials



Operating Cycle



- 01. Reel
- 02. Photocell
- 03. Bottom Sealer
- 04. Eurohole Perforator
- 05. Vertical sealer
- 06. Tear notch
- 07. Scissors
- 08. Film draw
- 09. Suction cups
- 10. Towelette
- 11. Liquid dosing
- 12. Top sealer
- 13. Pick & place exit
- 14. Towelette reel
- 15. Towelette creasing
- 16. Towelette folding
- 17. Towelette heating
- 18. Liquid drive& flattener
- 19. Towelette scissors
- 20. Towelette folding
- 21. Towelette inserter

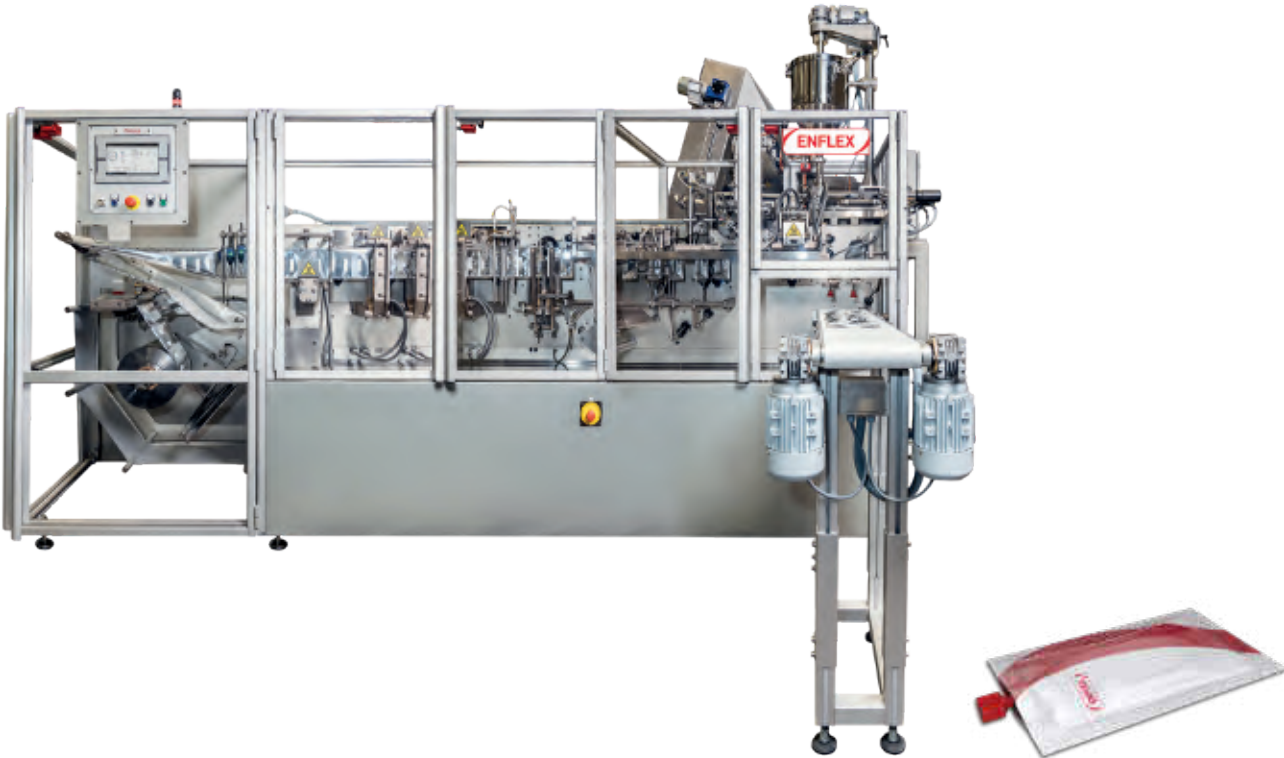
Technical Specifications

		Simplex		Duplex	
Min pouch size, W x H	mm	50 x 70		50 x 70	
Max pouch size, W x H	mm	190 x 225		90 x 225	
Max pouch volume	c.c	10		10	
Max output	ppm	90		180	
Type of material		Heatsealable			
Max reel width	mm	450			
Max reel diameter	mm	500			
Core reel diameter	mm	70 - 75			
Towelette folding type		2-fold	3-fold	4-fold	
Min towelette size, unfolded, W x H	mm	60 x 110	60 x 110	60 x 100	
Max towelette size, unfolded, W x H	mm	300x240	300x300	300x200	
Min / Max towelette width, folded	mm	17/70		17/40	
Max towelette reel diameter	mm	1000			
Consumption	kW	3,4		4,4	
Electrical data		200 - 480 V / 50, 60 Hz / 3Ph + G			

Enflex F-TC Series:

Horizontal Form Fill Seal machines specially designed for sachets with top cap.





F-17 DX-TC

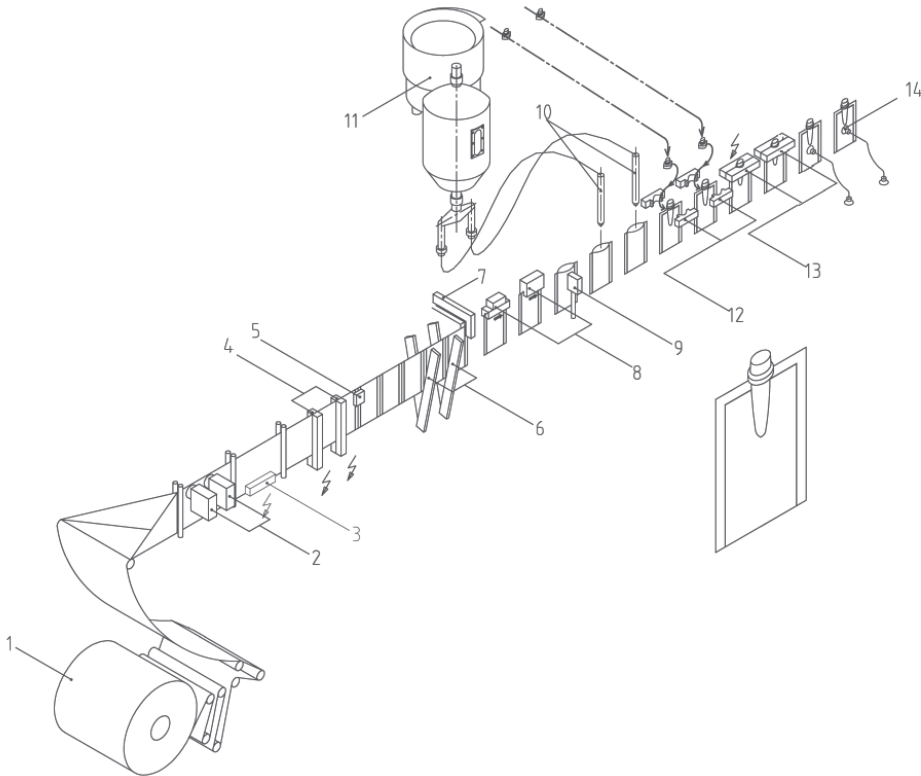
Horizontal Form-Fill-Seal (HFFS) machine for sachets with top cap, operating from a single reel of flexible packaging material, forming the pouch, filling it with product, adding the cap, and sealing.

Machine Highlights

- Duplex operation
- Smart HMI, easy and intuitive
- Top cap applicator including caps unscrambler and feeder
- Space to include additional equipment, such as cameras, printers, labelers...
- Low operating and maintenance costs
- 3- or 4-side sealed top cap sachets



Operating Cycle



01. Reel

02. Photocell

03. Bottom seal

04. Vertical seal

05. Emboss coding
06. Pouch cutting

07. Film drive

08. Pouch positioner

09. Opening

10. Filling
11. Cap feeder

12. Cap insertion and seal T

13. Op seal

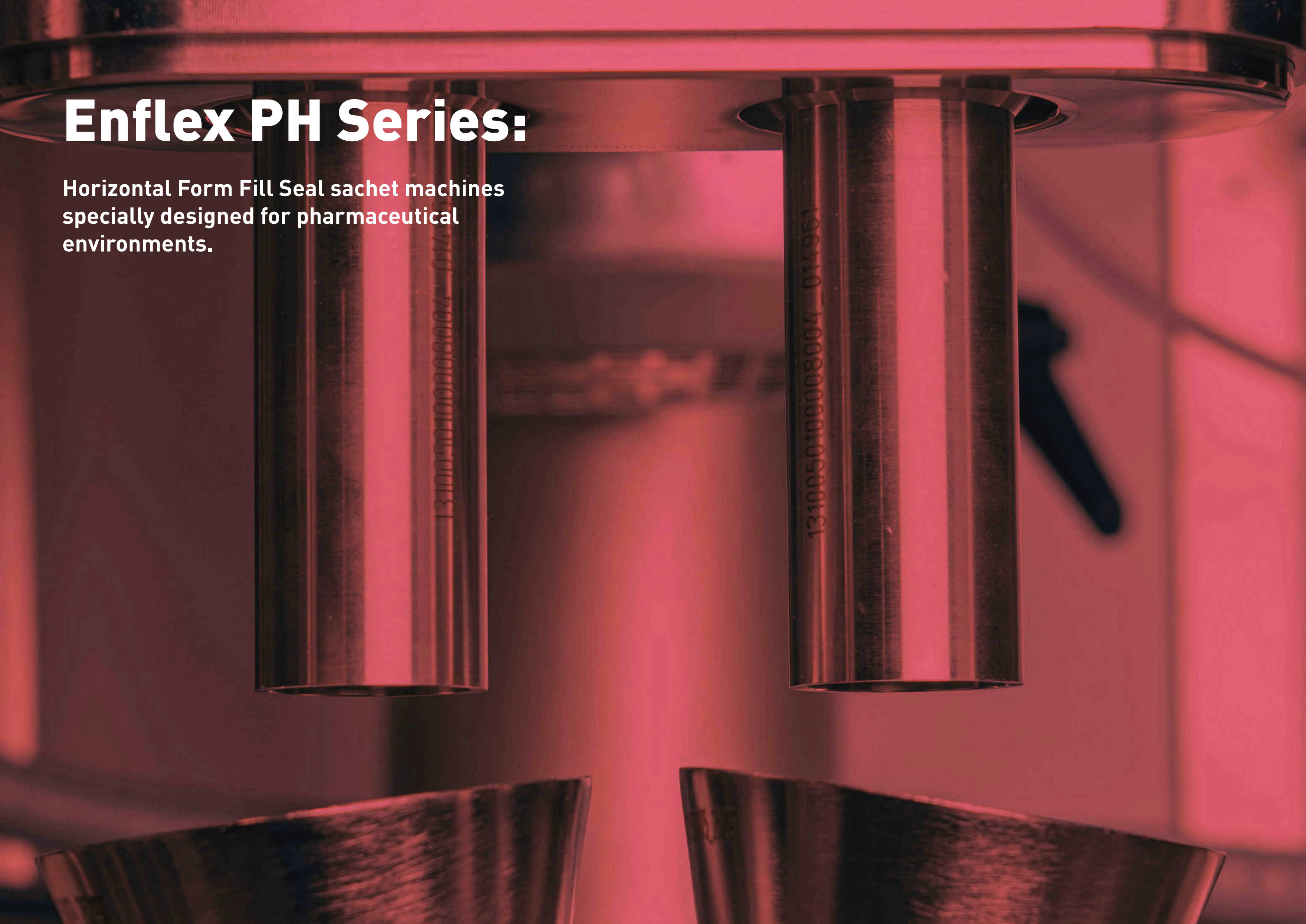
14. Pick and place exit

Technical Specifications

		Duplex
Min pouch size, W x H	mm	50 x 70
Max pouch size, W x H	mm	90 x 225
Max pouch volume	c.c	90
Max output	ppm	150
Type of material		Heatsealable
Max reel width	mm	450
Max reel diameter	mm	500
Core reel diameter	mm	70 - 75
Electrical data		200 - 480 V / 50, 60 Hz / 3Ph + G

Enflex PH Series:

Horizontal Form Fill Seal sachet machines
specially designed for pharmaceutical
environments.





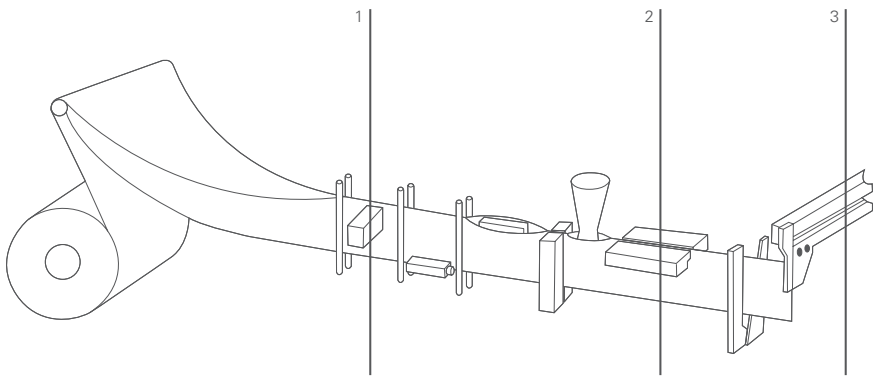
PH-11

Horizontal Form-Fill-Seal (HFFS) machine for pharma products in sachets, operating from a single reel of flexible packaging material, forming the pouch, filling it with product, and sealing.

Machine Highlights

- Simplex or duplex operation
- Smart HMI, easy and intuitive
- Reduced footprint
- Hygienic auger filler (GMP compliant)
- Compliant to 21 CFR Part 11 requirements
- Space to allocate Track & Trace systems, coders, cameras...
- Low operating and maintenance costs
- Wide variety of sachet formats available (3- or 4-side sealed sachets, twin sachets, strings of sachets...)
- Ready to work with 100% recyclable materials

Operating Cycle



01. Unwinding and folding **02.** Forming and filling **03.** Cutting and exit

Technical Specifications

		Simplex	Duplex
Min pouch size, W x H	mm	40 x 40	40 x 40
Max pouch size, W x H	mm	110 x 130	70 x 130
Dosing range, min - max	c.c	0,4 - 40	0,4 - 30
Max output	ppm	90	180
Type of material		Heatsealable	
Max reel width	mm	260	
Max reel diameter	mm	450	
Core reel diameter	mm	70 - 75	
Electrical data		200 - 480 V / 50, 60 Hz / 3Ph + G	
Machine dimensions, L x A x H	mm	2520 x 1060 x 1850	





PH-28

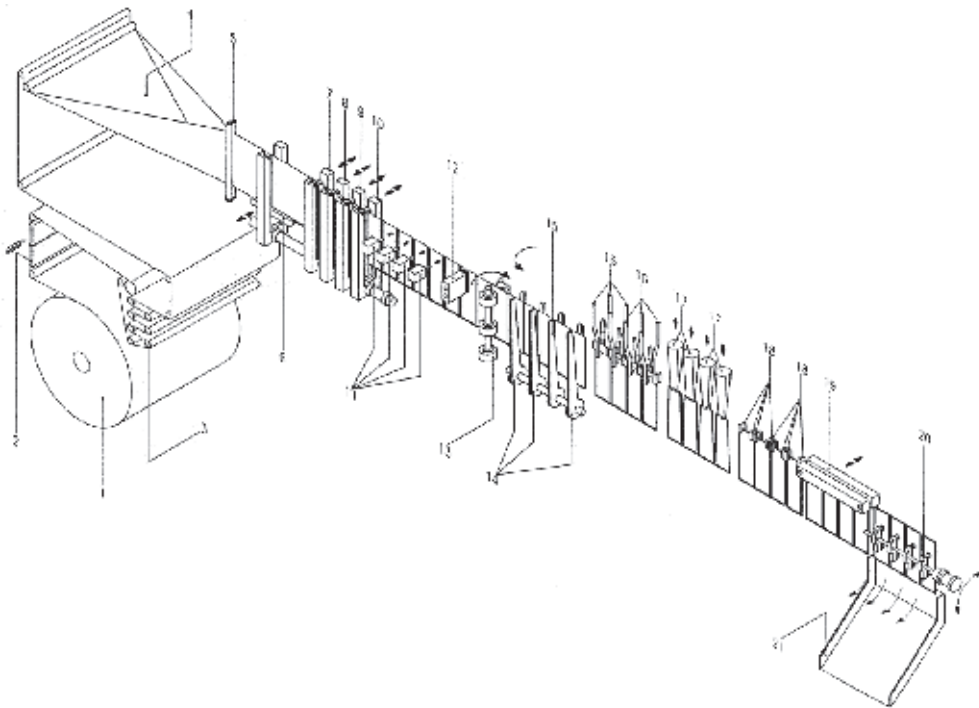
Horizontal Form-Fill-Seal (HFFS) machine for pharma products in sachets, operating from a single reel of flexible packaging material, forming the pouch, filling it with product, and sealing.

Machine Highlights

- Triplex or quadruplex operation
- Hygienic auger filler (GMP compliant)
- Pouch forming area separated from filling area
- Smart HMI
- Compliant to 21 CFR Part 11 requirements
- Space to allocate Track & Trace systems, coders, cameras...
- Optimized footprint
- Wide variety of sachet formats available (3- or 4-side sealed sachets, twin sachets...)
- Ready to work with 100% recyclable materials



Operating Cycle



01. Reel

02. Splicing table

03. Unwinder

04. Film folder

05. Film guides

06. Bottom seal

07. 1st vertical seal

08. 2nd vertical seal
09. 3rd vertical seal

10. 4th vertical seal

11. Tear notch

12. Photocell

13. Servo rollers for film transport

14. Knife

15. Knife
16. Pouch opening

17. Filling station

18. Pouch stretcher

19. Top sealing

20. Pick & Place discharge transfer

21. Reject ramp

Technical Specifications

		Triplex	Quadruplex
Min pouch size, W x H	mm	45 x 50	45 x 50
Max pouch size, W x H	mm	93 x 240	70 x 240
Dosing range, min - max	c.c	150	80
Max output	ppm	270	360
Type of material		Heatsealable	
Max reel width	mm	480	
Max reel diameter	mm	600	
Core reel diameter	mm	74 - 78	
Electrical data		200 - 480 V / 50, 60 Hz / 3Ph + G	
Machine dimensions, L x A x H	mm	5000 x 1200 x 1800	
Net weight	kg	5500	

ENFLEX PHS SERIES:

Vertical Multilane Stickpack machines for
pharmaceutical & healthcare applications.

03.041.020.06

03.041.020.06



PHS-30

Vertical Form-Fill-Seal machine for stick packs, operating from a single reel of flexible packaging material, forming the stick packs in multiple lanes, filling them with product, and sealing.

Machine Highlights

- From 1 to 5 lanes
- Smart HMI, multiple recipes
- Easy access for cleaning and maintenance
- Ideal for pharmaceutical products tests and sampling
- Compliance with GMP and 21 CFR Part 11 standards
- Servo-driven motion
- Quick and easy changeover
- Low maintenance costs
- Wide variety of stick packs formats available (lap seal, fin seal, shaped stick, twinpack, 3-side seal, side seal, string)



Technical Specifications

PHS-30		
Maximum reel width	mm	300
Track number		1 - 4
Width range	mm	14 - 80
Max length*	mm	160
Core reel diameter	mm	70
Max reel diameter	mm	450
Max output	ppm	300
Consumption	kW	3
Air consumption	NI/min	180



PHS-65

Vertical Form-Fill-Seal machine for stick packs, operating from a single reel of flexible packaging material, forming the stick packs in multiple lanes, filling them with product, and sealing.

Machine Highlights

- From 4 to 16 lanes
- Smart HMI, multiple recipes
- Easy access for cleaning and maintenance
- Space to allocate Track & Trace systems, printers, cameras...
- Rejection per independent track for sampling (rejection/sampling)
- Compliance with GMP and 21 CFR Part 11 standards
- Servo-driven motion
- Quick and easy changeover
- Low maintenance costs
- Wide variety of stick packs formats available (lap seal, fin seal, shaped stick, twinpack, 3-side seal, side seal, string)



Technical Specifications

PHS-65		
Maximum reel width	mm	650
Track number		4 - 16
Width range	mm	17 - 80
Max length*	mm	180
Core reel diameter	mm	70
Max reel diameter	mm	450
Max output	ppm	1200
Consumption	kW	5
Air consumption	NI/min	220



PHS-100

Vertical Form-Fill-Seal machine for stick packs, operating from a single reel of flexible packaging material, forming the stick packs in multiple lanes, filling them with product, and sealing.

Machine Highlights

- From 4 to 24 lanes
- Smart HMI, multiple recipes
- Easy access for cleaning and maintenance
- Space to allocate Track & Trace systems, printers, cameras...
- Rejection per independent track for sampling (rejection/sampling)
- Compliance with GMP and 21 CFR Part 11 standards
- Servo-driven motion
- Quick and easy changeover
- Low maintenance costs
- Wide variety of stick packs formats available (lap seal, fin seal, shaped stick, twinpack, 3-side seal, side seal, string)

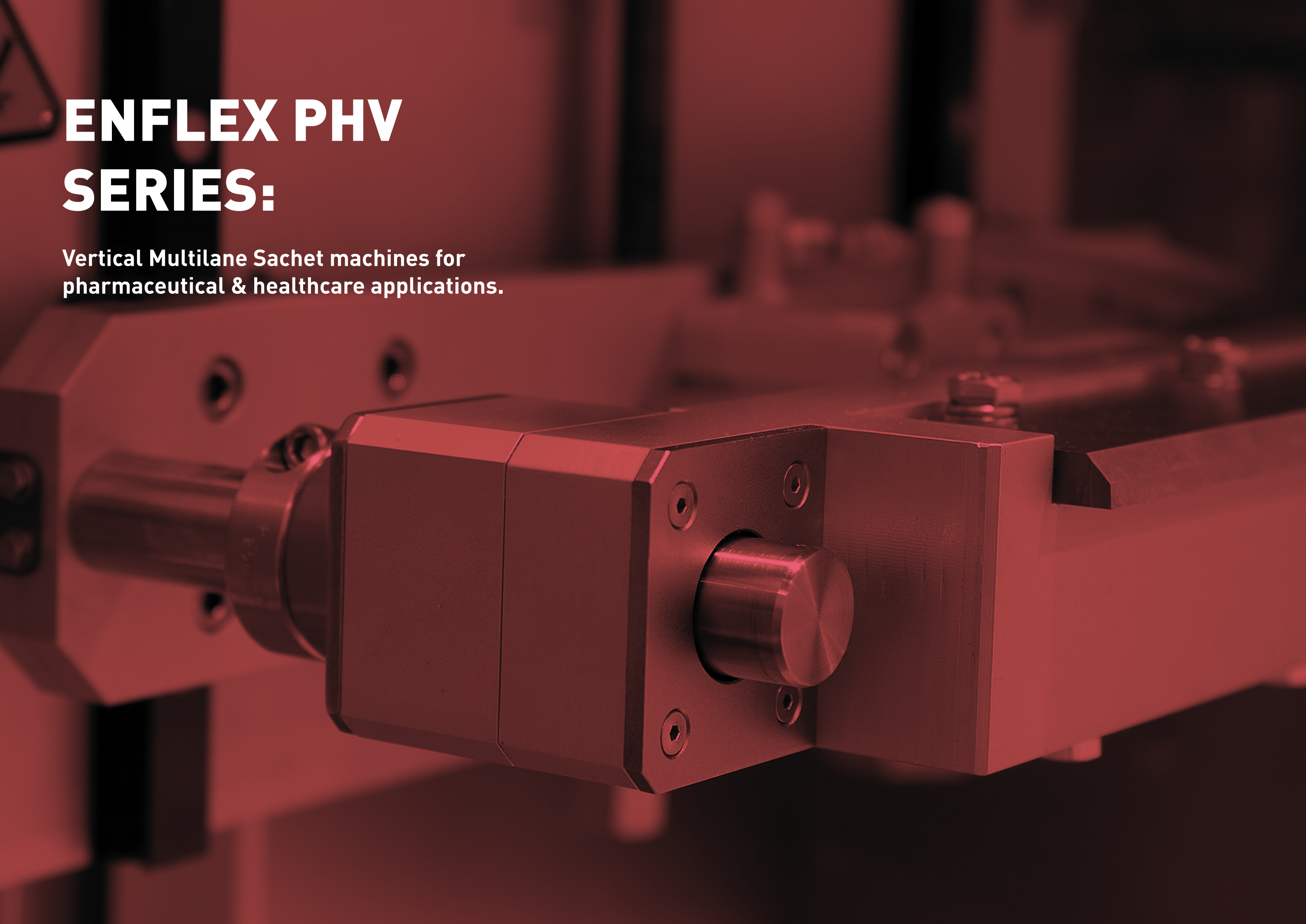


Technical Specifications

PHS-100		
Maximum reel width	mm	1000
Track number		14 - 24
Width range	mm	17 - 80
Max length*	mm	180
Core reel diameter	mm	150
Max reel diameter	mm	500
Max output	ppm	1800
Consumption	kW	5
Air consumption	NI/min	220

ENFLEX PHV SERIES:

Vertical Multilane Sachet machines for
pharmaceutical & healthcare applications.





PHV-65

Vertical Form-Fill-Seal machine for sachets, operating from a single reel of flexible packaging material, forming the sachets in multiple lanes, filling them with product, and sealing.

Machine Highlights

- From 2 to 9 lanes
- Smart HMI, multiple recipes
- Easy access for cleaning and maintenance
- Space to allocate Track & Trace systems, printers, cameras...
- Rejection per independent track for sampling (rejection/sampling)
- Compliance with GMP and 21 CFR Part 11 standards
- Servo-driven motion
- Quick and easy changeover
- Low maintenance costs
- Wide variety of sachet formats available (4-side sealed single sachets, twin sachets, strings...)



Technical Specifications

PHV-65		
Maximum reel width	mm	650
Track number		2 - 9
Width range	mm	25 - 150
Max length*	mm	150
Core reel diameter	mm	150
Max reel diameter	mm	500
Max output	ppm	675
Consumption	kW	5
Air consumption	NI/min	180



Technical Specifications

PHV-100		
Maximum reel width	mm	1000
Track number		3 - 14
Width range	mm	25 - 150
Max length*	mm	159
Core reel diameter	mm	150
Max reel diameter	mm	500
Max output	ppm	1050
Consumption	kW	5
Air consumption	NI/min	180

PHV-100

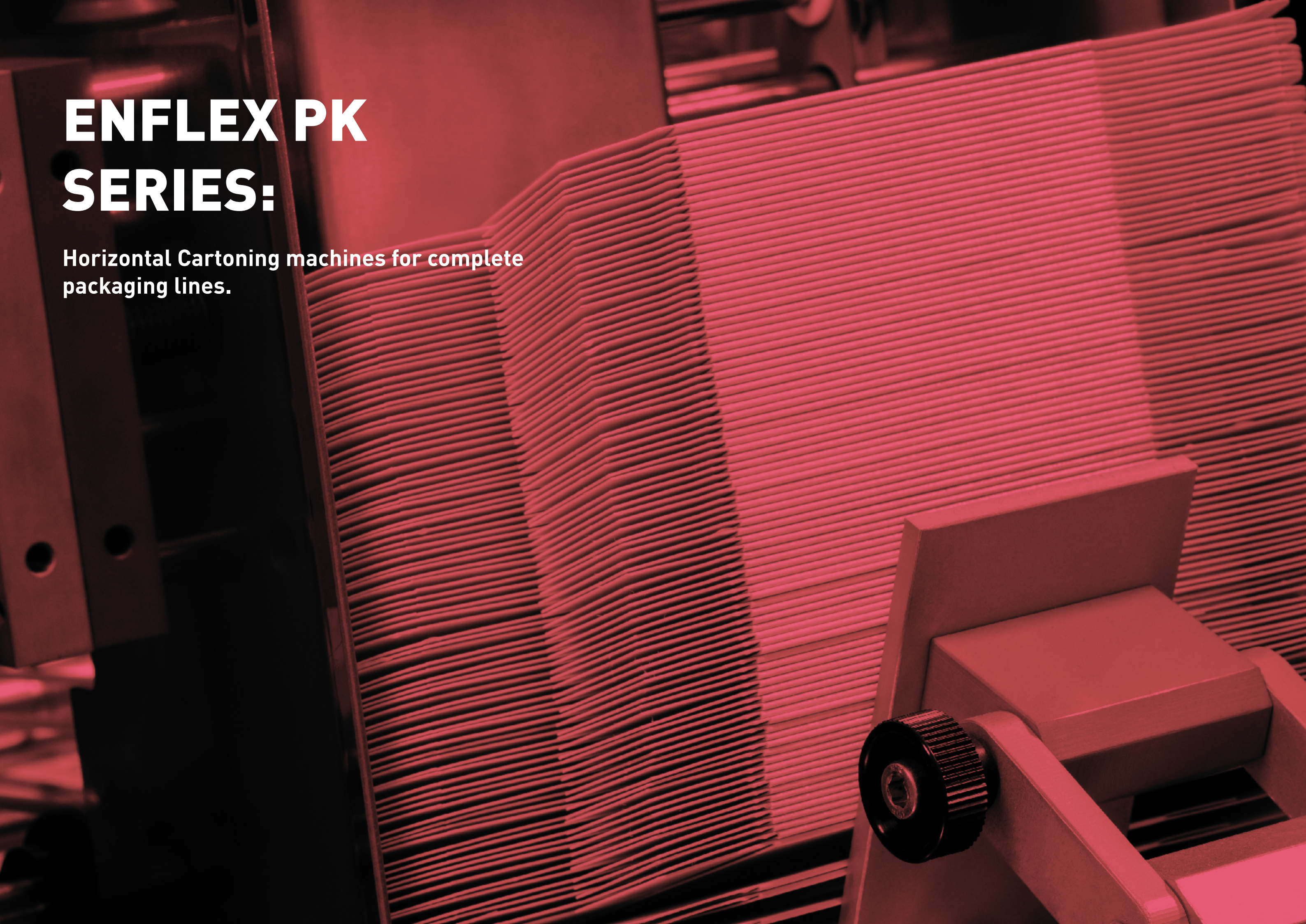
Vertical Form-Fill-Seal machine for sachets, operating from a single reel of flexible packaging material, forming the sachets in multiple lanes, filling them with product, and sealing.

Machine Highlights

- From 3 to 14 lanes
- Smart HMI, multiple recipes
- Easy access for cleaning and maintenance
- Space to allocate Track & Trace systems, printers, cameras...
- Rejection per independent track for sampling (rejection/sampling)
- Compliance with GMP and 21 CFR Part 11 standards”
- Servo-driven motion
- Quick and easy changeover
- Low maintenance costs
- Wide variety of sachet formats available (4-side sealed single sachets, twin sachets, strings...)

ENFLEX PK SERIES:

Horizontal Cartoning machines for complete
packaging lines.



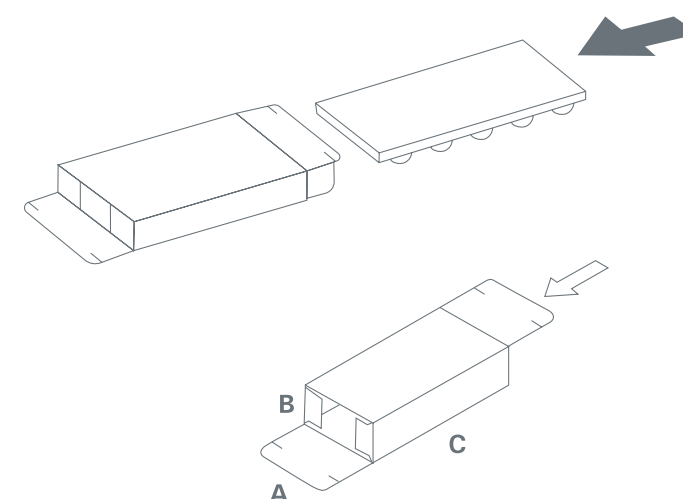


PK-221

Side-load intermittent motion cartoning machine, operating from pre-glued cartons, inserting the product inside laterally, and closing the carton.

Machine Highlights

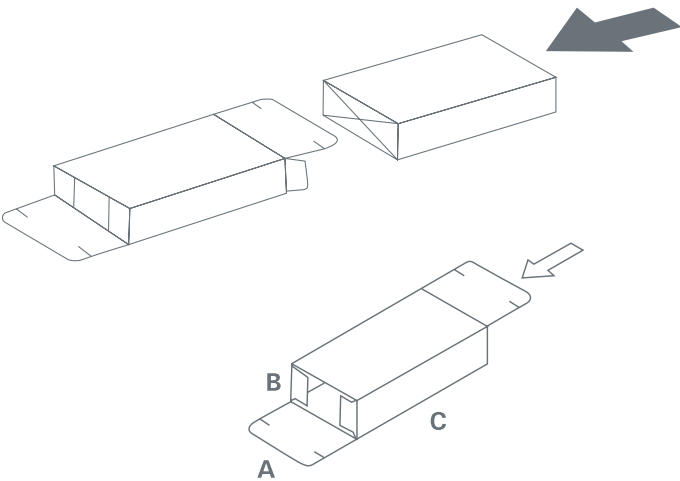
- Feeding systems for sachets, stickpacks...
- Smart HMI
- Balcony style design ensures accessibility, easy cleaning and maintenance
- Neat separation between electrical and mechanical sections
- Space to allocate pre-folded leaflets and booklet dispensers as well as Track & Trace systems, printers, cameras...
- Compliance with GMP and 21 CFR Part 11 standards
- Full servo assisted motions
- Positive carton pick-up/forming
- Quick and easy changeover"
- Pre-glued carton boxes with parallel or alternate flaps. Closures available: tuck-in, hot-melt or combination of tuck-in/hot-melt (i.e. tamper evident).



Technical Specifications

PK-221		
Max output	ppm	120
Electric data		230 - 400 V / 50 HZ
Installed power (Hot melt closure)	kW	8
Installed power (Tuck-in closure)	kW	3
Air consumption	NI/min	200
Changeover time	min	15
Approx. weight	kg	1450
A	mm	15 - 120
B	mm	15 - 90
C	mm	60 - 210





PK-222

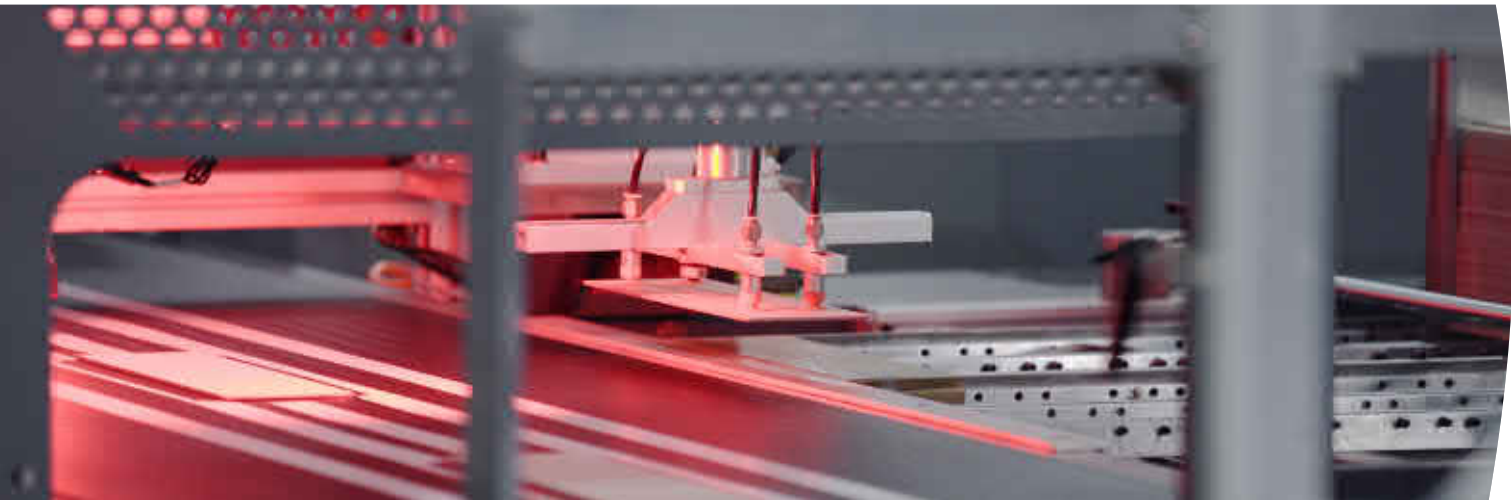
Side-load intermittent motion cartoning machine, operating from pre-glued cartons, inserting the product inside laterally, and closing the carton.

Machine Highlights

- Feeding systems for sachets, stickpacks...
- Smart HMI
- Balcony style design ensures accessibility, easy cleaning and maintenance
- Neat separation between electrical and mechanical sections
- Space to allocate pre-folded leaflets and booklet dispensers as well as Track & Trace systems, printers, cameras...
- Compliance with GMP and 21 CFR Part 11 standards
- Full servo assisted motions
- Positive carton pick-up/forming
- Quick and easy changeover"
- Pre-glued carton boxes with parallel or alternate flaps. Closures available: tuck-in, hot-melt or combination of tuck-in/hot-melt (i.e. tamper evident).

Technical Specifications

PK-222		
Max output	ppm	85 - 90
Electric data		230 - 400 V / 50 HZ
Installed power (Hot melt closure)	kW	8
Installed power (Tuck-in closure)	kW	3
Air consumption	NI/min	200
Changeover time	min	15
Approx. weight	kg	1450
A	mm	15 - 150
B	mm	15 - 90
C	mm	60 - 250



Coesia Group in the world



COESIA is a group of innovation-based industrial and packaging solutions companies operating globally, headquartered in Bologna, Italy.

Coesia's companies are leaders in the sectors of:

- **Advanced automated machinery**
- **Industrial process solutions**
- **High-performance transmissions**

Coesia's customers are leading players in a broad range of industries, including Consumer Goods, Tobacco, Healthcare, Aerospace, Racing & Automotive and Electronics.

Volpak S.A.U

Pol. Ind. Can Vinyalets
C/ Can Vinyalets 4
08130 Santa Perpètua de Mogoda
Barcelona, Spain



www.enflex.es